



King's Harbour Master Plymouth

LNTM No 041/24

PLNTM 041 SEAWATER INTAKE INSTALLATION WORKS - DIRECTION

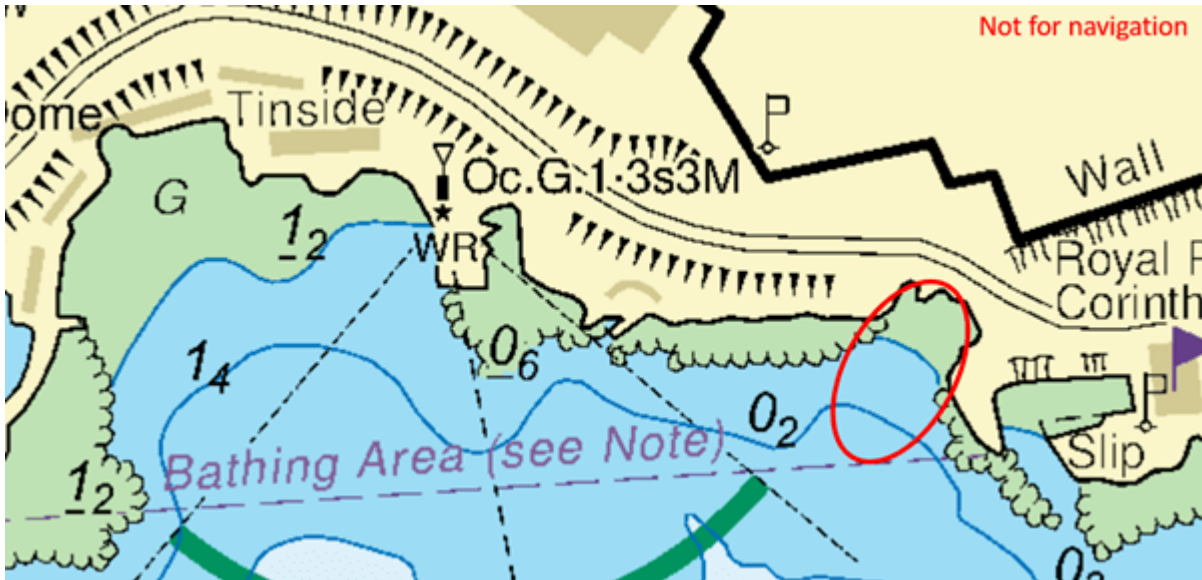
PLYMOUTH LOCAL NOTICE TO MARINERS 041/24

MARINE BIOLOGICAL ASSOCIATION SEAWATER INTAKE INSTALLATION WORKS - DIRECTION

1. This notice is a direction by the King's Harbour Master (KHM) Plymouth pursuant to the Dockyard Port of Plymouth Order 2020.
2. Works will be taking place in Tinside East Bathing area within the area indicted by a red circle in Annex A. Works will commence on 7th May and last for approximately 1 week.
3. The works will include installation of a water inlet pipe and associated protection from the shore extending 27 meters out to sea. Due to the nature of the works the public are directed to stay clear of the location during the specified dates.
4. The vessels below will be operating between Queen Anne's Battery and the site. Vessels involved in works will maintain listening watch on VHF channel 14 for the duration of the works.

Boy Brendan – Work Boat
Scafftender 1 – Tender
Scafftender 2 – Tender
Temporary barges
5. Mariners are requested to pass at a safe distance and minimise wash when passing vessels engaged in operations.
6. Appropriate shapes will be displayed as required by International Regulations for Preventing Collisions at Sea.
7. Cancel this PLNTM 14 May 2024.

Annex A



Friday 03 May 2024

R Giles
King's Harbour Master, Plymouth